

Installation instructions for 'Revolution, a monument for the television revolution' (1990) by Jeffrey Shaw, Coll. ICN

1. Pull the rubber power cable through the hole at the edge of the floor panel and through a hole at the bottom to the centre of the ground plate.



The power cable is being passed to the bottom of the floor plate.



At the centre of the floor plate the cable is pulled upwards

2. Position the 4 floor panels on the floor (mortise and tenon joint). Position the panel carrying the cable as the last one. Power cable should be facing the nearest wall socket. Adjust instability of the platform with cardboard or felt.



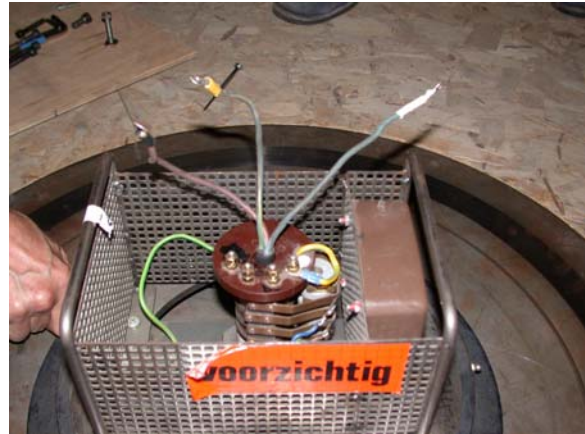
3. Place the metal plate in position on the centre of the floor plate and pull the cable through the central hole of the metal plate (notice the marking 'XX' on the floor plate and on the metal plate for correct position).



The power cable is being pulled through the central hole of the metal plate

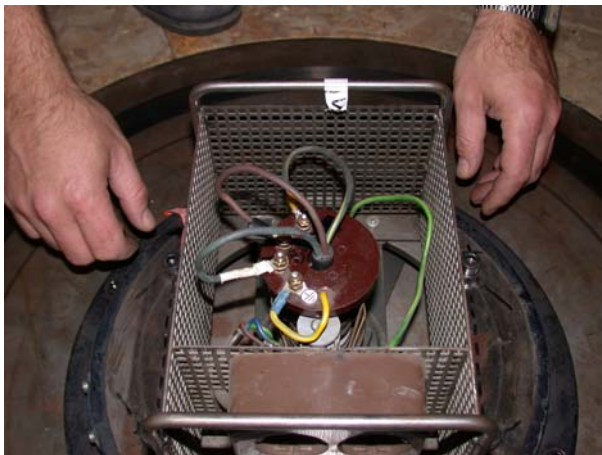
Position of the metal plate on the floor panels

4. Place turntable and pull the cable through the centre hole. Notice the position of 'XX'. Fasten the disc through the metal plate to the platform with bolts (included).



The turntable is being placed and fastened to the metal plate

5. Connect the wires of the power cable to the wiper (make sure that the cable is NOT connected to mains!!) blue: 2, brown: 3, green/yellow 1



The wires are connected to the screws at the wiper

6. Remove the perforated sheet at the backside of the metal frame. Remove bolts on top of the turntable. Position the metal frame over the turntable (notice the marking 'achterzijde' on the turntable).



The perforated sheet at the back of the metal frame is being removed



The frame is positioned over the turntable

7. Fasten the frame with bolts using provided toolkey. Install tracking wheel/optical encoder (black cylinder with wire) on bolt at left hand side (use spring)



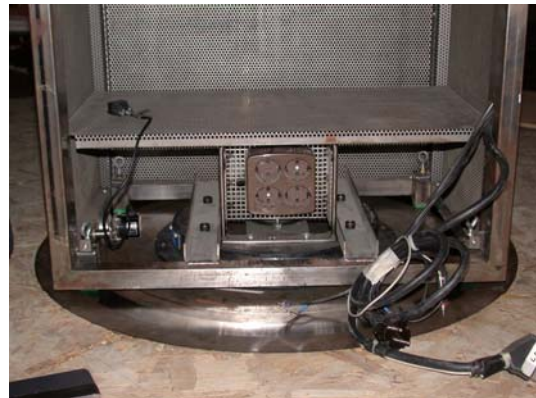
The frame is being connected.



Tracking wheel/optical encoder is being connected to the inner left side of the frame.



Close-up of the tracking wheel/optical encoder



View of the frame positioned over the turntable.
To the left side the tracking wheel/optical encoder.

8. Install the speakers at the sides on top of the first plate in lower compartment of the frame. Insert floppy disk into computer and connect the keyboard. Position computer and keyboard between the speakers. Turn the computer one quarter turn to the left.

Position Eprom audio player on top of the computer, in front of the keyboard.

Insert laserdisc NO. IMAGO 5 into laserdisc player. Position laserdisc player in compartment above the computer. Notice to turn the laserdisc player one quarter turn to the left.



View on the lower compartment of the metal frame (backside).

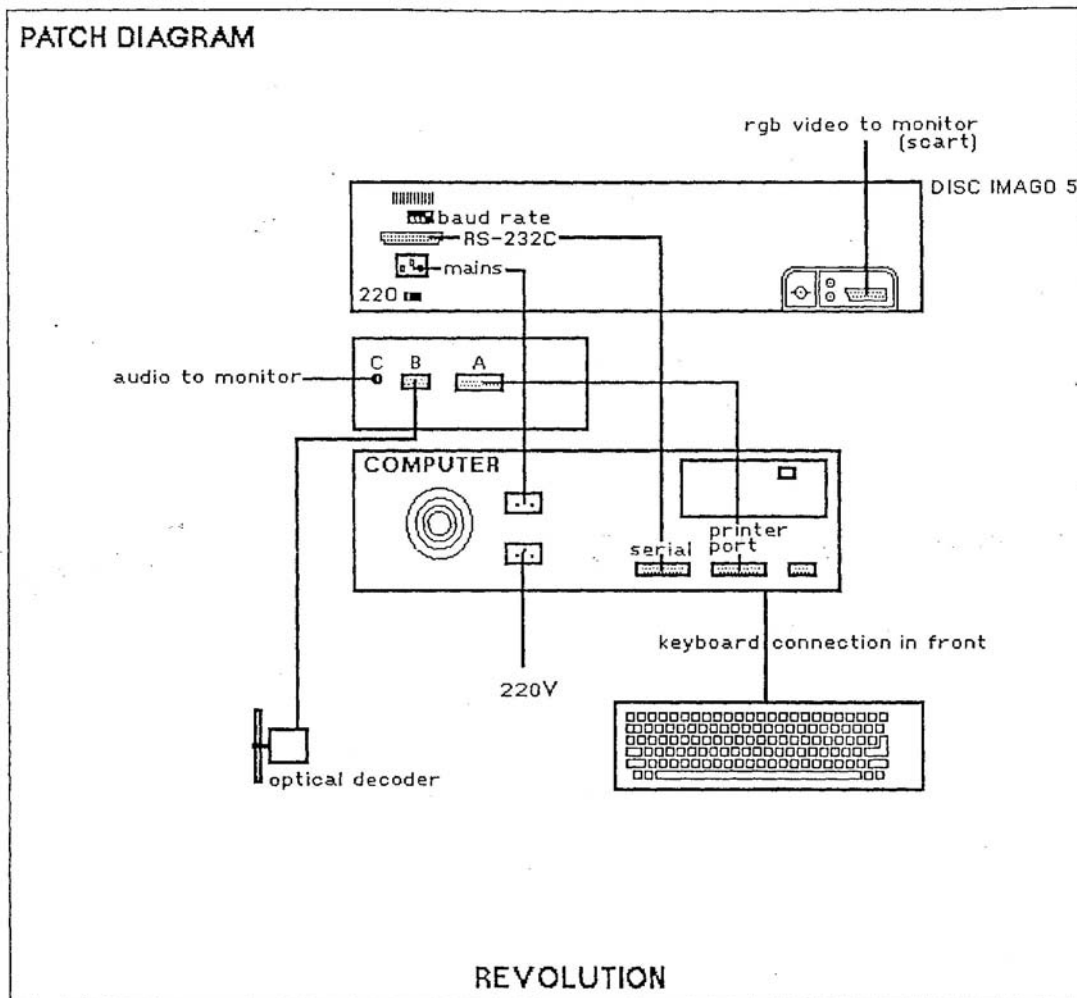
9. Place monitor on top (lock with screws at the back).



The monitor is being screwed to the frame

10. Connect equipment according to patch diagram below. Connect the jump lead to video input, 2 speakers' cables and the canon plug for power.





PN Read for optical decoder: optical encoder/tracking wheel

11. Insert pushing bar in frame, lock with bolt. Notice that the bar must be turned downwards.



The metal pushing bar is being connected to the upper part of the frame with a mortise and tenon joint



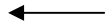
The metal strip on the leather part of the pushing bar must be turned downwards

12. The corners of the metal frame are provided with rubber brake blocks that must be aligned with screw bolts, so that frame rests on the turntable without pressure. Adjust breaks in bottom corners of the frame. Counter pressure must be equal in all angles.

13. Switch power on, the machine will start automatically, wait for approx. 45 sec. until a split-screen image appears on the monitor. Adjust sound level of monitor.

Additional remark: if the image does not respond after start-up or during playing: switch off power for 20 seconds and start again. When problems still occur: check wiring and cabling.

14. The power cable should be a visible part of the installation. Notice that the cable is connected to a wall socket (preferably not a socket in the floor) and rests on the floor in a relaxed curve.



Power cable should rest on the floor in a relaxed way and be connected to a wall socket

Creator: Role:	Menke, Nathalie Registration, Photographs
Contributor: Role:	Coelho, Ramon Technician
Contributor: Role:	Scholte, Tatja Translation, Photographs
Date:	2004-07-20
Format:	Print, 7 pages Word, 19,994 kB
Publisher:	ICN Collections, Rijswijk NIM/Montevideo, Amsterdam
Rights:	ICN Collections, Rijswijk NIM/Montevideo, Amsterdam
Description:	List of parts of "Revolution, a monument for the television revolution" (1990) by Jeffrey Shaw, 16 parts
Relation to files:	List of parts Registration CD ROM with pictures